

NOBLELIFT

A Series 4.0/4.5/5.0 Ton

IC Forklift



NEW *Noblelift Products*
ARRIVAL

NOBLELIFT INTELLIGENT EQUIPMENT CO., LTD.

A Series 4.0/4.5/5.0 Ton IC Forklift

The A Series 4-5 ton IC forklift features market-proven core components for reliable performance. Designed with safety, durability, efficiency, and comfort in mind, it integrates Noblift's expertise in IC forklifts with the latest technology to deliver exceptional value and long-lasting performance.

Powerful & Reliable Performance

- Compatible with multiple low-emission, high-performance engines.
- Reinforced drive axle with superior casting precision and strength.
- Proven soft-connect transmission ensures smooth and reliable operation.
- Heavy-duty cast steering axle offers high load capacity and extended lifespan.

Optimized Design for Efficiency

- Upgraded hydraulic braking system enhances reliability and comfort.
- Extended wheelbase increases load capacity by 5%.
- Enlarged high-position air intake grille improves airflow and engine efficiency.
- Large LCD display provides real-time vehicle status monitoring.
- High-strength alloy steel mast for durability; Enhanced chain tensile strength and safety factor.

Energy-Saving & High Efficiency

- Enlarged hydraulic pipelines and optimized joint layout extend component lifespan.
- Dual-pump hydraulic system improves energy efficiency.
- Standard LED lighting provides energy efficiency, longevity, and reliability.
- Load-sensing technology prioritizes steering to reduce power waste.

Enhanced Comfort & User-Friendly Features

- Optimized cooling system with an enlarged aluminum plate-fin radiator significantly improves cooling performance.
- Standard air filter alarm alerts users for timely maintenance.
- Upgraded dual-threaded locking mechanism allows easier adjustments.
- Intelligent shifting system prevents second-gear starts (hydraulic model).

Driver-Centric Design for Comfort

- Optimized brake and accelerator pedals enhance driving comfort.
- Small-diameter steering wheel reduces effort and enhances ease of operation.
- Anti-slip metal pedals and other ergonomic features improve user comfort.

Engine Configuration Table

Engine Model	Quanchai V35-88C41	Mitsubishi S6S-G364CSFL	Xinchai 4E30YG52
Engine Description	(China IV)	(Euro IIIA)	(Euro V)
Engine Code	Q2	S3	X8
Power Type	Diesel	Diesel	Diesel
Power/Speed (kw/rpm)	65/2200	52/2200	55.8/2200
Torque (N.m/rpm)	350/1800	248/1700	320/1200-1600
Displacement (L)	3.47	4.966	2.97
Applicable Tonnage	4-5t	4-5t	4-5t



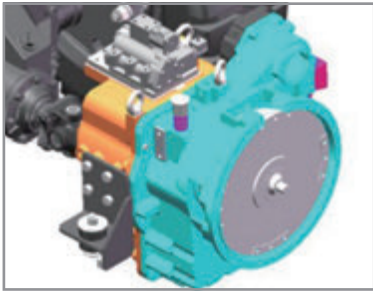
Lift cylinder cushioning for smooth handling.



Simple reliable hood with key lock option.



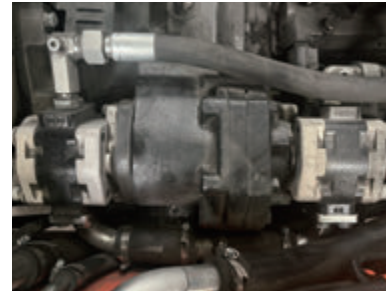
Upgraded drum brakes for improved safety and comfort.



Proven soft-link hydraulic transmission (Hydraulic Model).



Snap-fit baseplate with tool-free removal.



Dual-pump hydraulic system for reduced fuel consumption (Hydraulic Model).



Electro-hydraulic directional switch & multifunction handle (Hydraulic Model).



Air filter alarm for timely maintenance and engine protection.



Improved locking mechanism for easy adjustments.



Wider mast for better visibility.



Large LCD display with real-time vehicle status.



High-quality rear tires for extended service life.



Larger grab handle for easier entry and exit .



Anti-slip pedals and ergonomic layout for comfort .



Full LED lighting for energy efficiency and longevity.





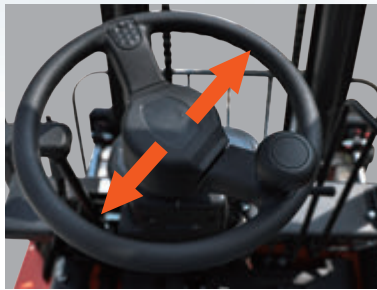
High-position intake grille for optimized airflow.



Large aluminum radiator for enhanced cooling .



Multiple low-emission engine options available.



Small-diameter steering wheel for reduced operator effort.



Refined pedal layout for improved comfort (Hydraulic Model).



Identification	1.1	Manufacture(abbreviation)		NOBLELIFT	NOBLELIFT	NOBLELIFT	NOBLELIFT	NOBLELIFT	NOBLELIFT
	1.2	Manufacturer's type designation		CPC(D)40-AQ2	CPC(D)45-AQ2	CPC(D)50-AQ2	CPD40-AS3	CPD45-AS3	CPD50-AS3
	1.3	Drive:electric(battery or mains),diesel,petrol gas,manual)		Diesel	Diesel	Diesel	Diesel	Diesel	Diesel
	1.4	Type of operation(hand,pedestrian,standing,seated,order-picker)		Seated	Seated	Seated	Seated	Seated	Seated
	1.5	Load capacity/rated load	Q(kg)	4000	4500	5000	4000	4500	5000
	1.6	Load centre distance	c (mm)	500	500	500	500	500	500
	1.8	Load distance,centre of drive axle to fork	x (mm)	555	555	555	555	555	555
	1.9	wheelbase	y (mm)	2100	2100	2100	2100	2100	2100
	Weights	2.1	Service weight incl	kg	6350(6550)	6550(6750)	6800(7000)	6350(6550)	6550(6750)
2.2		Axle loading ,laden front/rear	kg	8850/1500	9700/1350	10500/1300	8850/1500	9700/1350	10500/1300
2.3		Axle loading,unladen front/rear	kg	2900/3450	2900/3650	2900/3900	2900/3450	2900/3650	2900/3900
Wheels, Chassis	3.1	Type:solid rubber,superelastic,pneumatic,polyurethane		Pneumatic tire	Pneumatic tire	Pneumatic tire	Pneumatic tire	Pneumatic tire	Pneumatic tire
	3.2	Tyres size,front		8.25-15-14PR	300-15-18PR	300-15-18PR	8.25-15-14PR	300-15-14PR	300-15-14PR
	3.3	Tyres size,rear		7.00-12-12PR	7.00-12-12PR	7.00-12-12PR	7.00-12-12PR	7.00-12-12PR	7.00-12-12PR
	3.5	Wheels,number front/rear(×=driven wheels)		2X/2	2X/2	2X/2	2X/2	2X/2	2X/2
	3.6	Track width,front	b10 (mm)	1200	1200	1200	1200	1200	1200
	3.7	Track width,rear	b11 (mm)	1210	1210	1210	1210	1210	1210
	Basic Dimensions	4.1	Mast/fork carriage tilt forward/backward	$\alpha/\beta(^{\circ})$	6/12	6/12	6/12	6/12	6/12
4.2		lowered mast height	h1(mm)	2250	2250	2250	2250	2250	2250
4.3		Free lift	h2(mm)	150	150	150	150	150	150
4.4		Lift height	h3(mm)	3000	3000	3000	3000	3000	3000
4.4a		Lift height (Including cargo fork)	h23(mm)	3050	3050	3050	3050	3050	3050
4.5		Extended mast height	h4(mm)	4300	4300	4300	4300	4300	4300
4.7		Overhead load guardheight	h6(mm)	2250	2250	2250	2250	2250	2250
4.8		Seat height/standing height	h7(mm)	1000	1000	1000	1000	1000	1000
4.12		Coupling height	h10(mm)	390	390	390	390	390	390
4.19		Overall length (Including cargo fork)	l1(mm)	4305	4305	4305	4305	4305	4305
4.20		Overall length	l2(mm)	3235	3235	3235	3235	3235	3235
4.21		Overall width (Frame/tires)	b1(mm)	1480/1430	1480/1490	1480/1490	1480/1480	1480/1490	1480/1490
4.22		Fork dimensions	s/e/l(mm)	1070/150/50	1070/150/50	1070/150/50	1070/150/50	1070/150/50	1070/150/50
4.23		Fork mounting grade		3A	3A	3A	3A	3A	3A
4.24		Width of fork rack	b3 (mm)	1380	1380	1380	1380	1380	1380
4.31		Ground clearance ,laden,under mast	m1(mm)	180	180	180	180	180	180
4.32		Ground clearance,centre of wheelbase	m2(mm)	235	235	235	235	235	235
4.34.1		Aisle width for pallets 1000×1200 crossways	Ast(mm)	4685	4685	4685	4685	4685	4685
4.34.2		Aisle width for pallets 800×1200 lengthways	Ast(mm)	4885	4885	4885	4885	4885	4885
4.35		Turning radius	Wa (mm)	2930	2930	2930	2930	2930	2930
4.36	Inside turning radius	b13(mm)	960	960	960	960	960	960	
Performance Data	5.1	Travel speed,laden/unladen,mechanical drive	km/h	/	/	/	/	/	/
		Travel speed,laden/unladen, hydrodynamic drive	km/h	24/25	24/25	24/25	21/22	21/22	21/22
	5.2	Lift speed,laden/unladen(Hydrodynamic) Two stage gantry	mm/s	/	/	/	/	/	/
		Lift speed,laden/unladen(Hydrodynamic) Two stage gantry	mm/s	530/560	530/560	530/560	450/500	450/500	450/500
	5.3	lowering speed,laden/unladen Two stage gantry	mm/s	400/430	400/430	400/430	410/430	400/430	400/430
	5.6	Max.Drawbar pull ,laden/unladen mechanical drive	kN	/	/	/	/	/	/
	5.6a	Max.Drawbar pull ,laden/unladen hydrodynamic drive	kN	40/22	40/22	40/22	34/22	34/22	34/22
	5.7	Max.Gradient performance,laden/unladen S2 mechanical drive	%	/	/	/	/	/	/
	5.7a	Max.Gradient performance,laden/unladen S2 hydrodynamic drive	%	26/20	26/20	26/20	22/20	22/20	22/20
	5.10	Service brake		Hydraulic	Hydraulic	Hydraulic	Hydraulic	Hydraulic	Hydraulic
Engine	7.1	Engine builder		Quanchai V35-88C41 (China IV)	Quanchai V35-88C41 (China IV)	Quanchai V35-88C41 (China IV)	Mitsubishi S6S-G364CSFL (Euro IIIA)	Mitsubishi S6S-G364CSFL (Euro IIIA)	Mitsubishi S6S-G364CSFL (Euro IIIA)
	7.2	Engine power rating ISO1585	kw	65	65	65	52	52	52
	7.3	Rated speed	rpm	2200	2200	2200	2300	2300	2300
	7.4	Number of cylinders/displacement	cm3	4/3470	4/3470	4/3470	6/4966	6/4966	6/4966
	7.5a	Maximum torque	N.m/rpm	350/1800	350/1800	350/1800	248/1700	248/1700	248/1700
	7.9	Nominal voltage	V	12	12	12	24	24	24
	7.10	Battery capacity	V/Ah	12/120	12/120	12/120	12/80	12/80	12/80
Gearbox	8.1	Transmission type		Hydrodynamic	Hydrodynamic	Hydrodynamic	Hydrodynamic	Hydrodynamic	Hydrodynamic
	8.2	Gear forward/backward		2/1	2/1	2/1	2/1	2/1	2/1
	8.3	Shifting mode		Hydraulic	Hydraulic	Hydraulic	Hydraulic	Hydraulic	Hydraulic
Other Details	10.1	Operating pressure for attachments	Mpa	18.5	18.5	18.5	18.5	18.5	18.5
	10.2	Oil volume for attachments	L/min	60	60	60	60	60	60
	10.4	Fuel tank volume	L	90	90	90	90	90	90
	10.8	Traction pin specification DIN 15170		35	35	35	35	35	35

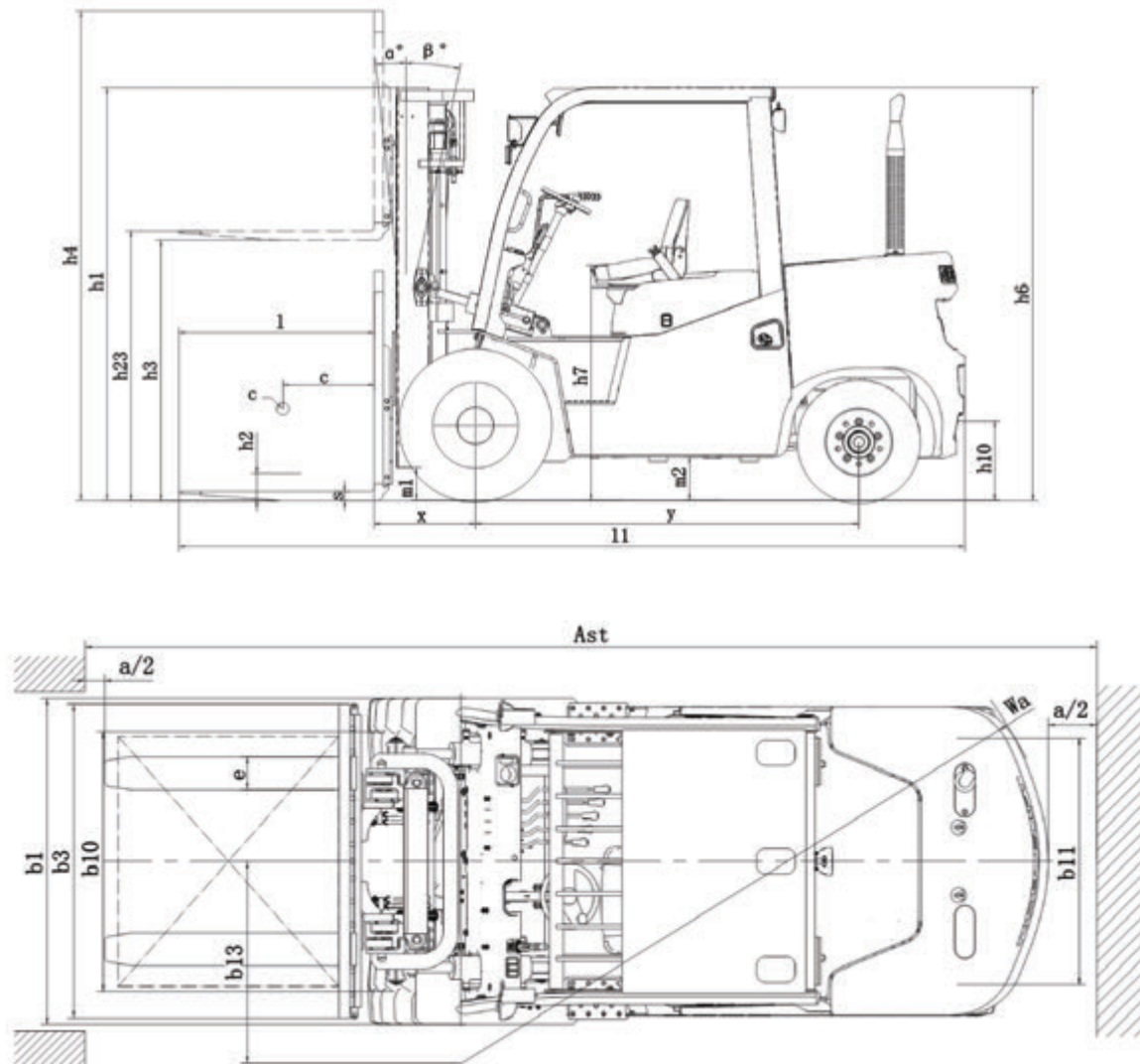
Identification	1.1	Manufacture(abbreviation)		NOBLELIFT	NOBLELIFT	NOBLELIFT
	1.2	Manufacturer's type designation		CPCD40-AX8	CPCD45-AX8	CPCD50-AX8
	1.3	Drive:electric(battery or mains),diesel,petrol gas,manual)		Diesel	Diesel	Diesel
	1.4	Type of operation(hand,pedestrian,standing,seated,order-picker)		Seated	Seated	Seated
	1.5	Load capacity/rated load	Q(kg)	4000	4500	5000
	1.6	oad centre distance	c (mm)	500	500	500
	1.8	Load distance,centre of drive axle to fork	x (mm)	555	555	555
	1.9	wheelbase	y (mm)	2100	2100	2100
	Weights	2.1	Service weight incl	kg	6350(6550)	6550(6750)
2.2		Axle loading ,laden front/rear	kg	8850/1500	9700/1350	10500/1300
2.3		Axle loading,unladen front/rear	kg	2900/3450	2900/3650	2900/3900
Wheels, Chassis	3.1	Type:solid rubber,superelastic,pneumatic,polyurethane		Pneumatic tire	Pneumatic tire	Pneumatic tire
	3.2	Tyres size,front		8.25-15-14PR	300-15-18PR	300-15-18PR
	3.3	Tyres size,rear		7.00-12-12PR	7.00-12-12PR	7.00-12-12PR
	3.5	Wheels,number front/rear(×=driven wheels)		2X/2	2X/2	2X/2
	3.6	Track width,front	b10 (mm)	1200	1200	1200
	3.7	Track width,rear	b11 (mm)	1210	1210	1210
	Basic Dimensions	4.1	Mast/fork carriage tilt forward/backward	$\alpha/\beta(^{\circ})$	6/12	6/12
4.2		lowered mast height	h1(mm)	2250	2250	2250
4.3		Free lift	h2(mm)	150	150	150
4.4		Lift height	h3(mm)	3000	3000	3000
4.4a		Lift height (Including cargo fork)	h23(mm)	3050	3050	3050
4.5		Extended mast height	h4(mm)	4300	4300	4300
4.7		Overhead load guardheight	h6(mm)	2250	2250	2250
4.8		Seat height/standing height	h7(mm)	1000	1000	1000
4.12		Coupling height	h10(mm)	390	390	390
4.19		Overall length (Including cargo fork)	l1(mm)	4305	4305	4305
4.20		Overall length	l2(mm)	3235	3235	3235
4.21		Overall width (Frame/tires)	b1(mm)	1480/1480	1480/1490	1480/1490
4.22		Fork dimensions	s/e/l(mm)	1070/150/50	1070/150/50	1070/150/50
4.23		Fork mounting grade		3A	3A	3A
4.24		Width of fork rack	b3 (mm)	1380	1380	1380
4.31		Ground clearance ,laden,under mast	m1(mm)	180	180	180
4.32		Ground clearance,centre of wheelbase	m2(mm)	235	235	235
4.34.1		Aisle width for pallets 1000×1200 crossways	Ast(mm)	4685	4685	4685
4.34.2		Aisle width for pallets 800×1200 lengthways	Ast(mm)	4885	4885	4885
4.35		Turning radius	Wa (mm)	2930	2930	2930
4.36	Inside turning radius	b13(mm)	960	960	960	
Performance Data	5.1	Travel speed,laden/unladen,mechanical drive	km/h	/	/	/
		Travel speed,laden/unladen, hydrodynamic drive	km/h	21/22	21/22	21/22
	5.2	Lift speed,laden/unladen(Hydrodynamic) Two stage gantry	mm/s	/	/	/
		Lift speed,laden/unladen(Hydrodynamic) Two stage gantry	mm/s	450/500	450/500	450/500
	5.3	owering speed,laden/unladen Two stage gantry	mm/s	410/430	400/430	400/430
	5.6	Max.Drawbar pull ,laden/unladen mechanical drive	kN	/	/	/
	5.6a	Max.Drawbar pull,laden/unladen hydrodynamic drive	kN	35/22	35/22	35/22
	5.7	Max.Gradient performance,laden/unladen S2 mechanical drive	%	/	/	/
	5.7a	Max.Gradient performance,laden/unladen S2 hydrodynamic drive	%	22/20	22/20	22/20
	5.10	Service brake		Hydraulic	Hydraulic	Hydraulic
Engine	7.1	Engine builder		Xinchai 4E30YG52 (Euro V)	Xinchai 4E30YG52 (Euro V)	Xinchai 4E30YG52 (Euro V)
	7.2	Engine power rating ISO1585	kw	55.8	55.8	55.8
	7.3	Rated speed	rpm	2300	2300	2300
	7.4	Number of cylinders/displacement	cm3	4/2970	4/2970	4/2970
	7.5a	Maximum torque	N.m/rpm	320/1200-1600	320/1200-1600	320/1200-1600
	7.9	Nominal voltage	V	12	12	12
	7.10	Battery capacity	V/Ah	12/120	12/120	12/120
Gearbox	8.1	Transmission type		Hydrodynamic	Hydrodynamic	Hydrodynamic
	8.2	Gear forward/backward		2/1	2/1	5t车型可选择二级8米门架。 2/1
	8.3	Shifting mode		Hydraulic	Hydraulic	Hydraulic
Other Details	10.1	Operating pressure for attachments	Mpa	18.5	18.5	18.5
	10.2	Oil volume for attachments	L/min	60	60	60
	10.4	Fuel tank volume	L	90	90	90
	10.8	Traction pin specification DIN 15170		35	35	35

Table of door frame parameters

Designation	Mast table	Lift height	Mast height			Free lift		Front overhang	Tilt angle	Load capacity					
			Closed mast height	Extended mast height		Without load backrest	With load backrest			Capacity table(kg) C=500mm without attachment					
				Without load backrest	With load backrest					Single tire			Dual tires		
			mm	mm	mm	mm	mm			mm	mm	mm	mm	mm	mm
		mm	4.0t/4.5t/5.0t	4.0t/4.5t/5.0t	4.0t/4.5t/5.0t	4.0t/4.5t/5.0t	4.0t/4.5t/5.0t	4.0t/4.5t/5.0t	forward/backward	4.0t	4.5t	5.0t	4.0t	4.5t	5.0t
		(°)	kg	kg	kg	kg	kg	kg	kg	kg	kg	kg	kg	kg	kg
Two-stage ZT	A40/45/50/M210	2100	1800	3010	3340	150	150	555	6/12	4000	4500	5000	4000	4500	5000
	A40/45/50/M250	2500	2000	3410	3740	150	150	555	6/12	4000	4500	5000	4000	4500	5000
	A40/45/50/M260	2600	2050	3510	3840	150	150	555	6/12	4000	4500	5000	4000	4500	5000
	A40/45/50/M270	2700	2100	3610	3940	150	150	555	6/12	4000	4500	5000	4000	4500	5000
	A40/45/50/M290	2900	2200	3810	4140	150	150	555	6/12	4000	4500	5000	4000	4500	5000
	A40/45/50/M300	3000	2250	3910	4240	150	150	555	6/12	4000	4500	5000	4000	4500	5000
	A40/45/50/M330	3300	2400	4210	4540	150	150	555	6/12	4000	4500	5000	4000	4500	5000
	A40/45/50/M350	3500	2500	4410	4740	150	150	555	6/12	4000	4500	5000	4000	4500	5000
	A40/45/50/M370	3700	2600	4610	4940	150	150	555	6/12	4000	4500	5000	4000	4500	5000
	A40/45/50/M375	3750	2625	4660	4990	150	150	555	6/12	4000	4500	5000	4000	4500	5000
	A40/45/50/M400	4000	2800	5010	5340	150	150	555	6/6	4000	4500	5000	4000	4500	5000
	A40/45/50/M425	4250	2925	5260	5590	150	150	555	6/6	3800	4300	4700	4000	4500	5000
	A40/45/50/M450	4500	3050	5510	5840	150	150	555	6/6	3700	4200	4500	4000	4500	5000
	A40/45/50/M475	4750	3175	5760	6090	150	150	555	6/6	3500	4000	4250	4000	4200	4600
	A40/45/50/M480	4800	3200	5810	6140	150	150	555	6/6	3500	4000	4250	3700	4200	4600
	A40/45/50/M500	5000	3300	6010	6340	150	150	555	6/6	3200	3600	4000	3400	4000	4200
	A40/45/50/M550	5500	3550	6510	6840	150	150	555	6/6	2900	3200	3600	3200	3600	3800
A40/45/50/M600	6000	3800	7010	7340	150	150	555	6/6	2600	3000	3300	2900	3200	3600	
A40/45/50/M650	6500	4150	7710	8040	150	150	555	3/6	2300	2700	3000	2600	2900	3300	
A40/45/50/M700	7000	4300	8010	8340	150	150	555	3/6	2000	2400	2700	2300	2600	3000	
Two-stage Full Free Lift	A40/45/50/U230	2300	1900	3214	3544	1144	744	555	6/12	4000	4500	5000	4000	4500	5000
	A40/45/50/U243	2430	1965	3365	3695	1230	830	555	6/12	4000	4500	5000	4000	4500	5000
	A40/45/50/U250	2500	2000	3415	3745	1245	845	555	6/12	4000	4500	5000	4000	4500	5000
	A40/45/50/U261	2610	2055	3525	3855	1300	900	555	6/12	4000	4500	5000	4000	4500	5000
	A40/45/50/U271	2710	2150	3625	3955	1350	950	555	6/12	4000	4500	5000	4000	4500	5000
	A40/45/50/U300	3000	2250	3915	4245	1495	1095	555	6/12	4000	4500	5000	4000	4500	5000
	A40/45/50/U330	3300	2400	4215	4545	1645	1245	555	6/12	4000	4500	5000	4000	4500	5000
	A40/45/50/U350	3500	2500	4415	4745	1745	1345	555	6/12	4000	4500	5000	4000	4500	5000
	A40/45/50/U375	3750	2625	4665	4995	1870	1470	555	6/12	4000	4500	5000	4000	3500	5000
	A40/45/50/U400	4000	2750	4915	5245	1995	1595	555	6/6	4000	4500	5000	4000	4500	5000
	A40/45/50/U450	4500	3000	5416	5746	2246	1846	555	6/6	3700	4200	4500	4000	4500	5000
	A40/45/50/U500	5000	3250	5916	6246	2496	2096	555	6/6	3200	3600	4000	3400	4000	4200
	A40/45/50/U550	5500	3500	6416	6746	2746	2346	555	6/6	2900	3200	3600	3200	3600	3800
	A40/45/50/U600	6000	3750	6916	7246	2996	2596	555	6/6	2600	3000	3300	2900	3200	3600
Three-stage Full Free Lift	A40/45/50/N360	3600	1950	4484	4814	1024	694	555	6/12	4000	4500	5000	4000	4500	5000
	A40/45/50/N392	3920	2060	4820	5150	1144	814	555	6/12	4000	4500	5000	4000	4500	5000
	A40/45/50/N400	4000	2090	4904	5234	1164	834	555	6/6	3800	4300	4700	4000	4500	5000
	A40/45/50/N435	4350	2200	5249	5579	1289	959	555	6/6	3500	4100	4400	3800	4300	4800
	A40/45/50/N450	4500	2250	5400	5730	1340	1010	555	6/6	3350	4000	4200	3500	4200	4700
	A40/45/50/N470	4700	2315	5602	5932	1406	1076	555	6/6	3250	3800	4050	3400	4000	4300
	A40/45/50/N480	4800	2350	5701	6031	1439	1109	555	6/6	3150	3700	3950	3300	3900	4100
	A40/45/50/N500	5000	2450	5899	6229	1539	1209	555	6/6	3050	3400	3800	3200	3800	4000
	A40/45/50/N540	5400	2585	6300	6630	1664	1334	555	6/6	2750	3000	3500	3000	3400	3700
	A40/45/50/N600	6000	2820	6900	7230	1904	1574	555	6/6	2400	2800	3150	2500	3000	3400
	A40/45/50/N650	6500	2995	7400	7730	2084	1754	555	3/6	2000	2400	2700	2400	2600	3000
	A40/45/50/N700	7000	3185	7930	8260	2264	1934	555	3/3	1700	2000	2300	2000	2300	2600
	A40/45/50/N750	7500	3297	8414	8744	2524	2194	555	3/3	1500	1800	2100	1800	2100	2400

150kg less with integral side shifter, 200kg less with external side shifter.
4-5t models can choose three levels 8 meters door frame.

Structural diagram



Technical Specifications

Overall Vehicle Performance Parameters

Model		CPC40/45/50	CPCD40/45/50	CPCD40/45/50
Configuration Number		AQ2	AQ2	AS3
Number of Gear Shifts (Forward/Reverse)		Dual-Shift Lever (2/2)	Electro-Hydraulic Directional Switch (2/1)	
Maximum Travel Speed (Fully Loaded/Unloaded)	km/h	18/19	24/25	21/22
Lifting Speed (Fully Loaded/Unloaded)	mm/s	500/530	530/560	450/500
Lowering Speed (Fully Loaded/Unloaded)	mm/s	400/430		400/430
Maximum Traction Force	kN	32/20	40/22	34/22
Maximum Climbing Ability	%	22/20	26/20	22/20

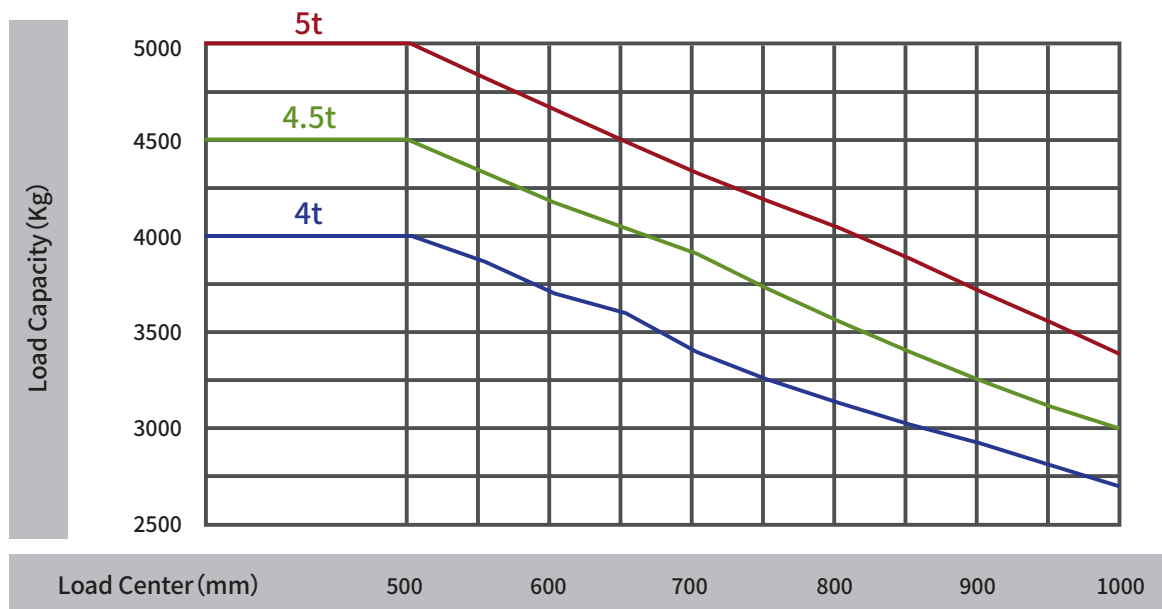
Standard Configuration

- Wide-view mast
- Overhead guard rain cover
- Vehicle Tools
- Reversing buzzer
- Combined Instrument Panel
- Standard forks
- LCD instrument panel
- LED signal lights
- Hour meter
- Torque Converter Oil Dipstick
- Standard load backrest
- Pneumatic tires
- Standard Seat
- Adjustable tilting steering column
- Counterweight Protection Grid
- Standard overhead guard
- Tow Pin
- Multiway Valve for dual-function
- Left and Right Rearview Mirrors
- Lockable fuel tank

Optional Upgrades

- Enclosed cabin
- Windshield
- Dual tires
- Rearview camera, Reversing radar
- High Exhaust
- Rear Armrest Horn Button
- Adjustable forks
- Heater
- Metal roof
- Electric Fan
- Over-speed Alarm
- Steering Cylinder Protection
- Half-Enclosed Seat
- Telematics
- Air conditioning
- Dual Air Filters
- Warning lights
- Fire extinguisher
- Tilt Cylinder Protection Boot
- Half-Enclosed Suspension Seat
- Raised Overhead Guard
- Solid tires
- Rear Work Light
- Widened Fork Carriage
- User-Specified Color
- Side shifter

Load Curve Chart



NOBLELIFT CHINA

Address: 528 Changzhou Road, Taihu Sub-district,
Changxing, Zhejiang 313100 China
Tel: 86-572-6210817 6210311
Fax: 86-572-6210777 6128612
Email: info@noblelift.com
Http: www.noblelift.com www.noblelift.cn



Official website



Our Wechat

All specifications and figures are subject to change without notice for improvement.