

NOBLELIFT

NEW *Noblelift Products*
ARRIVAL

The OPH Series High-Level Order Picker **OPH10E/OPH12EK**



NOBLELIFT INTELLIGENT EQUIPMENT CO., LTD.

Exploring the OPH Series High-Level Order Picker

The Noblift OPH series of high-level order pickers can help operators efficiently handle various tasks in constantly changing, high-intensity environments.

From a long-term performance perspective, the OPH series offers significant advantages in visibility and speed, an operator-centric design, advanced technical components, and a comprehensive approach to ensuring operation.

Smarter systems, longer operation time

For operational productivity, high-level order pickers are a significant investment.

Therefore, ensuring operation time and exceptional performance is crucial. To this end, the OPH series combines robust construction with advanced technology to provide the availability and stability needed for success.

- ▶ Load capacity of 1000/1200 kilograms.
- ▶ Three-stage full-free lift mast, OPH10E maximum lift height: 6000 millimeters, OPH12EK maximum lift height: 11500 millimeters.
- ▶ Side battery extraction.
- ▶ 48-volt electrical system.
- ▶ AC drive, electric steering.
- ▶ Curtis controller.
- ▶ Optional dual operation, magnetic guidance.



All-Around Visibility for Outstanding Performance

Visibility is the foundation for ensuring safety and productivity.

Whether on the ground or at height, the Noblelift OPH series high-level order picker can provide operators with excellent visibility.

Clear Vision for Easy Operation

The large upper platform operating window combined with the clear-visibility mast design improves visibility under various working conditions and allows operators to see the next picking location even at height.

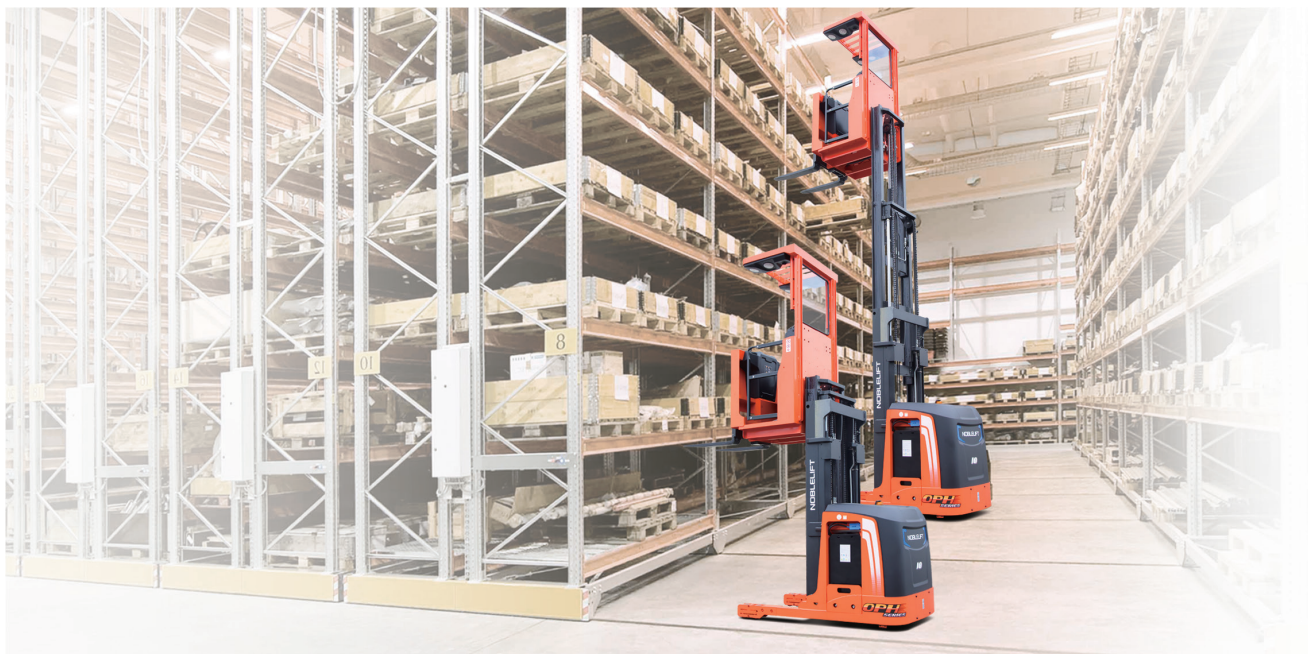
The centrally located operating window is a unique design in the industry, providing unobstructed visibility when lifting and driving in either direction.



High Performance

Given the importance of efficiency, the Noblelift OPH series is equipped with outstanding lifting/descending and traveling speeds and conveniently integrates forklift functions to help increase efficiency.

High-altitude stability and anti-slip traction control allow operators to position the forklift with greater confidence, enabling them to focus more on the picking tasks.



Operator-Centric Design

High-level order picker operators have multiple responsibilities, including picking products and operating the forklift. By utilizing various optional accessories and attachments, the operator's personal preferences and working conditions can be met, thereby improving operational efficiency.



Smart System for safe environment

Picking is a task that requires concentration. Smart systems can provide guidance to help operators improve their focus, ensuring the safety of the working environment and the efficiency of the work.



General

1.1	Manufacturer		NOBLELIFT								
1.2	Type designation		OPH10E			OPH12EK					
1.3	Drive		electric			electric					
1.4	Operator type		order picker			order picker					
1.5	Rated capacity	Q (kg)	1000			1200					
1.6	Load centre	C (mm)	400			400					
1.8	Load distance, centre of drive axle to fork	x (mm)	386			386					
1.9	Wheelbase	y (mm)	1576			1576					

Weight

2.1	Service weight (with battery)	kg	3730	3760	3880	3910	3940	4060	4185	4395	4885
-----	-------------------------------	----	------	------	------	------	------	------	------	------	------

Tyres

3.1	Tires		polyurethane			polyurethane					
3.2	Tire size, front	mm	343 x140			343X140					
3.3	Tire size, rear	mm	152X74			152X74					
3.5	Wheels, number front/ rear (x=driven wheels)		1x/4			1x/4					
3.6	Tread, front	b11 (mm)	/			/					
3.7	Tread, rear	b10 (mm)	964			1304					

4.2	Height, mast lowered	h1 (mm)	2315	2415	2815	2315	2415	2815	3145	3815	5015
4.3	Free Lift	h2 (mm)	40	140	540	40	140	540	870	1540	2740
4.4	Lift	h3 (mm)	4500	4800	6000	4500	4800	6000	7000	9000	11500
4.5	Height, mast extended	h4 (mm)	6775	7075	8275	6775	7075	8275	9275	11275	13775
4.7	Height of overhead guard (cabin)	h6 (mm)	2275			2275					
4.8	Stand height	h7 (mm)	214			214					
4.11	Additional Lift	h9 (mm)	710			710					
4.14	Stand height, elevated	h12 (mm)	4654	4954	6154	4654	4954	6154	7154	9154	11654
4.15	Height, lowered	h13 (mm)	60			60					
4.18	Width of loading surface	b9 (mm)	1080			1420					
4.20	Length to face of forks	l2 (mm)	2196			2196					
4.21	Overall width	b1/b2 (mm)	1080/1080			1080/1420					
4.22	Fork dimensions (standard)	s/ e/ l (mm)	40x122x800			40x122x800					
	Fork dimensions (optional length)	mm	800/1200			800/1200					
4.24	Fork-carriage width	b3 (mm)	790			790					
4.25	Fork spread	b5 (mm)	244-740			244-740					
4.27	Width across guide rolls, in 6.5 mm increments	b6 (mm)	/			/					
4.31	Ground clearance, laden, below mast	m1 (mm)	55			55					
4.34	Aisle width, minimum	Ast (mm)	1300			1620					
4.34.1	Aisle width for pallets 1000×1200 crossways	Ast (mm)	1400			1620					
4.34.2	Aisle width for pallets 800×1200 lengthways	Ast (mm)	1300			1620					
4.35	Turning radius	Wa (mm)	1830			1830					

Performance

5.1	Travel speed, laden/ unladen	km/h	9			9					
5.2	Lift speed, laden/ unladen	m/s	0.15/0.23			0.15/0.23					
5.3	Lowering speed, laden/ unladen	m/s	0.30/0.30			0.30/0.30					
5.10	Service brake		electromagnetic, regenerative			electromagnetic, regenerative					

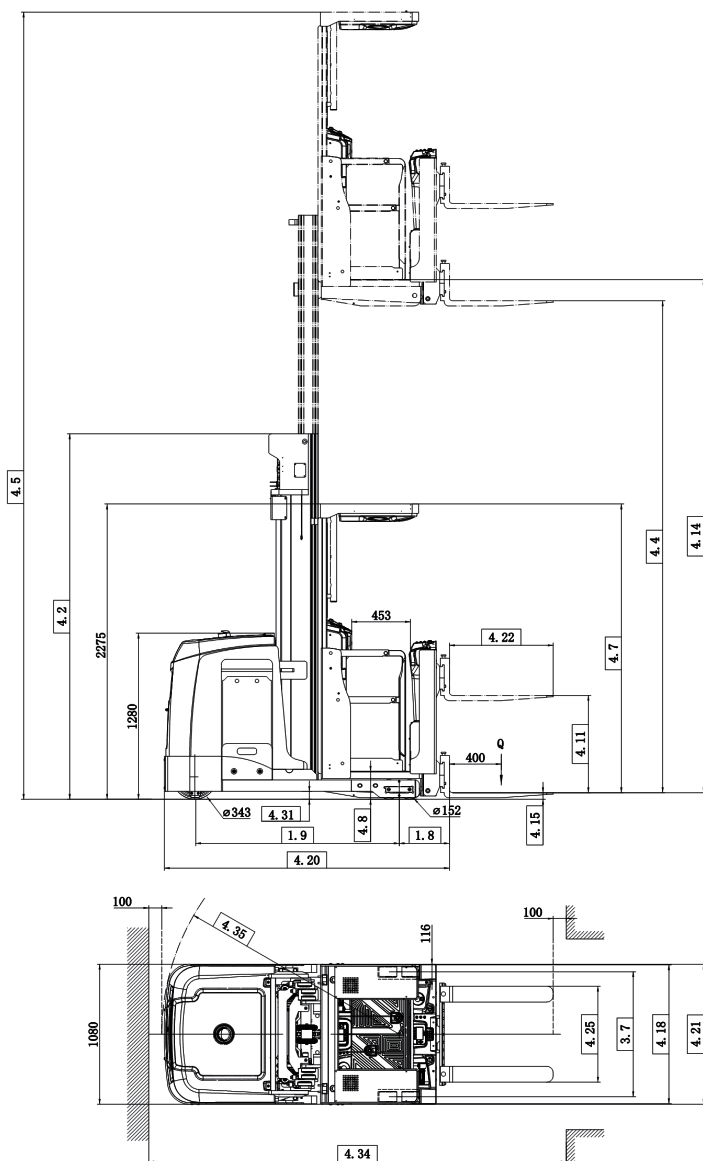
Electric-engine

6.1	Drive motor rating S2 60min	kW	3.9			3.9					
6.2	Lift motor rating at S3 15%	(V)/(Kw)	48V/8.2			48V/8.2					
6.3	Battery dimensions, maximum	lxwxh (mm)	374x975x785			374x975x785					
6.4	Battery voltage/ nominal capacity K5,Li K2	(V)/(Ah)	48V/420,48V/400 Li			48V/420,48V/400 Li					
6.5	Battery weight, minimum	kg	810			810					

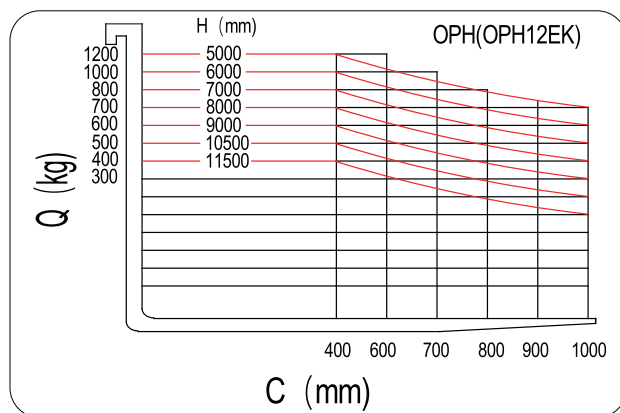
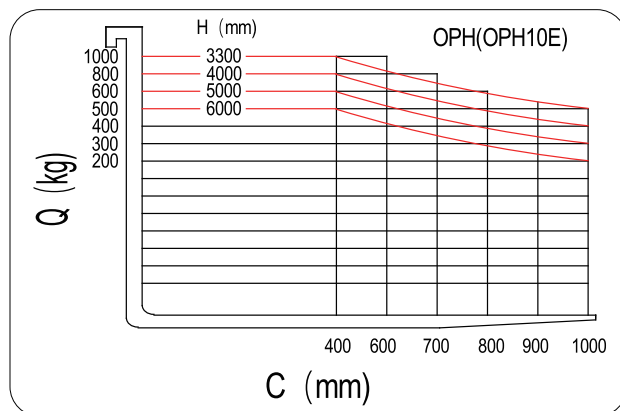
Other Details

8.1	Type of drive unit		AC			AC					
-----	--------------------	--	----	--	--	----	--	--	--	--	--

Structure diagram



Load curve diagram



NOBLELIFT CHINA

Add: 528 Changzhou Road, Taihu Sub-district,
Changxing, Zhejiang 313100 China
Tel: 86-572-6210817 6210311
Fax: 86-572-6210777 6128612
Email: info@noblelift.com
Http: www.noblelift.com www.noblelift.cn

All specifications and figures are subject to change without notice for improvement.



Official website



Our Wechat