

**NOBLELIFT**

A2 series 2.0/2.5/3.0/3.5/3.8 T  
**Lithium Battery Forklift**



**Cost-effective + Eco-friendly**  
Best Replacement for IC Forklift

**NEW** / *Noblelift Products*  
**ARRIVAL**

NOBLELIFT INTELLIGENT EQUIPMENT CO., LTD.

## A2 series 2.0/2.5/3.0/3.5/3.8T Lithium Battery Forklift

The A2-series lithium battery forklift is a new energy forklift product developed based on the architecture of Noblelift's internal combustion forklifts and the advantages of lithium battery technology. While continuing the optimized design of the electric counterbalance family, some key components are universal with internal combustion forklifts. The A-series outperforms traditional electric forklifts in terms of overall vehicle performance, ergonomics, reliability, maintenance, outdoor work capabilities, and load capacity. It meets customer usage scenarios for internal combustion forklifts and is an ideal choice for users in standard and heavy-duty working environments looking to switch from fuel to electricity.

### Performance

- The standard equipment offers a lifting and travel speed of 15 km/h, which can accommodate the majority of use scenarios for forklifts. The optional H configuration provides a lifting and travel speed of 20 km/h, meeting the performance requirements that are typical for internal combustion forklifts.
- The ground clearance of the entire vehicle has been increased for better passability; based on customer requirements, the lithium battery capacity is selectable from 135Ah to 460Ah (with standard equipment including electric heating).
- The mast has been widened, and the internal routing of the three-stage mast has been optimized for a better field of view; the spacing between the fork carriage rollers has been increased, reducing the incidence of mast-related malfunctions.
- The vehicle body system, mast system, steering system, control system, and drive axle are interchangeable with those of internal combustion forklifts.

### Appearance

- The design continues the A-series family's facial structure with a streamlined good looking shape.
- The overall appearance of the vehicle is simple, compact in size, and robust in appearance.
- All exposed components are made of metal, ensuring durability and reliability.

### Safety

- The design incorporates a long wheelbase, which enhances the longitudinal stability of the entire vehicle, significantly increasing the load capacity at the same lifting height.
- Reducing the rear axle load extends the lifespan of the steering tires.
- Wide-view mast with descent buffer to reduce impact.

### Comfort

- Ergonomic design increases legroom and headroom for the driver, enhances visibility for operation, and improves comfort with a smaller diameter steering wheel.
- Enlarge the boarding step and handrail to make getting on and off the vehicle more convenient.
- The front undercarriage is designed as a one-piece unit, which can be opened without tools, enhancing the convenience for daily maintenance and repairs.
- The streamlined integral hood reduces noise.

### Reliability

- Adopting the testing standards for internal combustion forklifts, the enhanced test intensity surpasses that of traditional electric forklifts.
- Thanks to large tire design, the vehicle offers a stable ride, making it suitable for outdoor work requirements.
- The electronic control system utilizes a fan for forced cooling and is strategically placed away from the hydraulic oil tank. The hydraulic pump motor is positioned near the counterweight ventilation outlet, resulting in a significant improvement in the overall thermal balance of the vehicle.
- The cast steering axle uses tapered roller bearings for the kingpin, enhancing reliability.
- The hydraulic piping layout is optimized, and the pipe joints use 24-degree cone seals to reduce hydraulic leakage.





**Battery voltage/capacity 76.8V**

Capacity (Ah/5h)	2-2.5t (High performance)	3-3.8t	3-3.8t (High performance)
135	○	○	/
150 (CE)	○	○	/
175	●	○	/
205 (CE)	○	●	/
230 (CE)	○	○	/
280 (CE)	○	○	○
300 (CE)	○	○	●
350 (CE)	○	○	○
410 (CE)	/	○	○
460 (CE)	/	○	○

●:standard ○:optional / :This option is not available

**Charger specification CE** 380V,Three-Phase,32A,5-core Industrial Power Plug

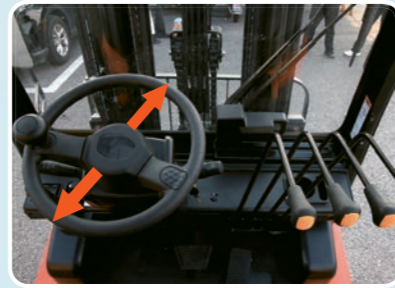
Capacity (Ah/5h)	2-3.8t(65A)	2-3.8t(100A)	2-3.8t(150A)	2-3.8t(200A)
135	●	/	/	/
150	●	/	/	/
175	●	○	/	/
205	●	○	/	/
230	●	○	/	/
280	●	○	○	/
300	●	○ 3-3.8t High performance standard	○	/
350	●	○	○	○
410	●	○	○	○
460	●	○	○	○

●:standard ○:optional / :This option is not available

The 65A/100A/150A charger is suitable for single-phase 220V input, with hal charging current.



Standard head-up display, safer operation.



The use of a smaller diameter steering wheel reduces the fatigue for the operator.



Cast Internal Combustion Forklift Steering Axle.



Convenient hydraulic oil level check.



The widened mast offers better visibility.



Full Vehicle LED Lighting.



Lithium Battery Charging Port.



Enlarged boarding step.



Front and rear wiper switch.



Easy maintenance.



New Mechanical Vibration-Damping Seat.



## A2 series 2.0/2.5T Table of Mast

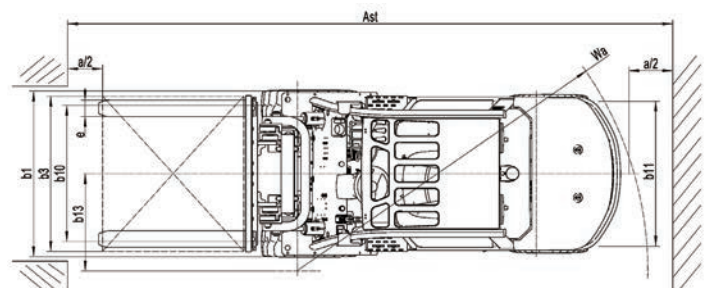
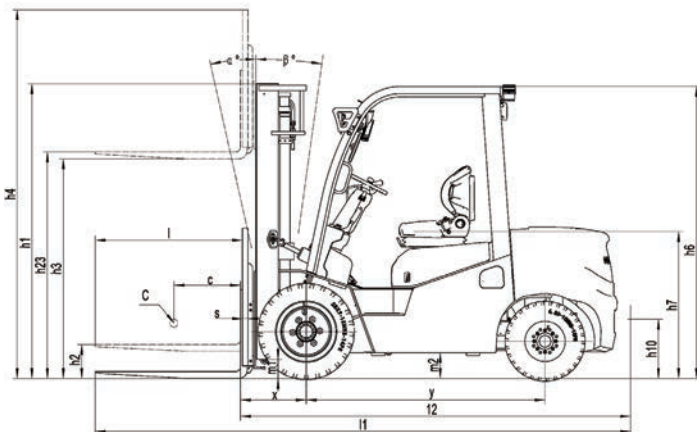
Designation	Mast table	Lift height	Mast height			Free lift		Front overhang	Tilt angle forward/ backward (°)	Load capacity			
			Closed mast height	Extended mast height		Without load backrest	With load backrest			Capacity table(kg) C=500mm without attachment			
				mm	mm					mm	Single tire		Dual tires
			2.0t/2.5t			2.0t/2.5t	2.0t/2.5t				2.0t	2.5t	2.0t
Two-stage ZT	A20/25/M200	2000	1615	2635	3045	140	140	465	6/12	2000	2500	2000	2500
	A20/25/M250	2500	1745	3135	3545	140	140	465	6/12	2000	2500	2000	2500
	A20/25/M270	2700	1845	3335	3745	140	140	465	6/12	2000	2500	2000	2500
	A20/25/M300	3000	1995	3635	4045	140	140	465	6/12	2000	2500	2000	2500
	A20/25/M330	3300	2145	3935	4345	140	140	465	6/12	2000	2500	2000	2500
	A20/25/M350	3500	2245	4135	4545	140	140	465	6/12	2000	2500	2000	2500
	A20/25/M360	3600	2345	4235	4645	140	140	465	6/12	2000	2500	2000	2500
	A20/25/M370	3700	2395	4335	4745	140	140	465	6/12	2000	2500	2000	2500
	A20/25/M380	3800	2445	4435	4845	140	140	465	6/12	2000	2500	2000	2500
	A20/25/M400	4000	2595	4635	5045	140	140	465	6/12	1900	2300	2000	2500
	A20/25/M430	4300	2745	4935	5345	140	140	465	6/6 * 6/12	1800	2100	1950	2450
	A20/25/M450	4500	2845	5135	5545	140	140	465	6/6 * 6/12	1700	2000	1900	2400
	A20/25/M480	4800	2995	5435	5845	140	140	465	6/6 * 6/12	1500	1700	1700	2100
	A20/25/M500	5000	3095	5635	6045	140	140	465	6/6 * 6/12	1400	1600	1600	2000
	A20/25/M550	5500	3345	6135	6545	140	140	465	3/6 * 3/6	1300	1400	1500	1800
A20/25/M600	6000	3595	6635	7045	140	140	465	3/6 * 3/6	1000	1050	1400	1600	
Two-stage Full Free Lift	A20/25/U250	2500	1810	3170	3545	1140	760	465	6/12	2000	2500	2000	2500
	A20/25/U270	2700	1910	3370	3745	1240	860	465	6/12	2000	2500	2000	2500
	A20/25/U300	3000	2010	3670	4045	1340	960	465	6/12	2000	2500	2000	2500
	A20/25/U330	3300	2160	3970	4345	1490	1110	465	6/12	2000	2500	2000	2500
	A20/25/U360	3600	2310	4270	4645	1640	1260	465	6/12	2000	2500	2000	2500
	A20/25/U400	4000	2560	4670	5045	1890	1510	465	6/12	1900	2300	2000	2500
Three-stage Full Free Lift	A20/25/N400	4000	1955	4695	5055	1270	910	475	6/6	1800	2100	1950	2450
	A20/25/N430	4300	2055	4995	5355	1370	1010	475	6/6	1700	2000	1900	2400
	A20/25/N450	4500	2125	5245	5605	1440	1080	475	6/6	1600	1900	1800	2300
	A20/25/N480	4800	2225	5495	5855	1540	1180	475	6/6	1500	1700	1700	2100
	A20/25/N500	5000	2290	5695	6055	1605	1245	475	6/6	1400	1600	1600	2000
	A20/25/N550	5500	2455	6195	6555	1770	1410	475	3/6	1050	1200	1500	1800
	A20/25/N600	6000	2675	6705	7055	1990	1630	475	3/6	700	800	1400	1600
	A20/25/N650	6500	2850	7195	7555	2165	1805	475	3/6	\	\	1300	1450
	A20/25/N700	7000	3055	7725	8055	2340	2010	475	3/6	\	\	1200	1300

100kg less with integral side shifter, 150kg less with external side shifter.

\* Optional tilt Angle for dual wheels.

2000-2500kg models can choose three levels 7500mm,8000mm door frame.

### Structure diagram



## A2 series 3.0/3.5/3.8 T Table of Mast

Designation	Mast table	Lift height	Mast height						Free lift				Front overhang		Tilt angle	Load capacity					
			Closed mast height		Extended mast height				Without load backrest		With load backrest					Capacity table(kg) C=500mm without attachment					
					Without load backrest		With load backrest						Single tire			Dual tires					
			mm		mm		mm		mm		mm		mm		forward/backward (°)	3.0t	3.5t	3.8t	3.0t	3.5t	3.8t
			mm	3.0t	3.5t/3.8t	3.0t	3.5t/3.8t	3.0t	3.5t/3.8t	3.0t	3.5t/3.8t	3.0t	3.5t/3.8t	3.0t		3.5t/3.8t	kg	kg	kg	kg	kg
Two-stage ZT	A30/35/M200	2000	1555	1670	2670	2790	3105	3105	145	150	145	150	480	485	6/12	3000	3500	3800	3000	3500	3800
	A30/35/M250	2500	1805	1920	3170	3290	3605	3605	145	150	145	150	480	485	6/12	3000	3500	3800	3000	3500	3800
	A30/35/M270	2700	1905	2020	3370	3490	3805	3805	145	150	145	150	480	485	6/12	3000	3500	3800	3000	3500	3800
	A30/35/M300	3000	2055	2170	3670	3790	4105	4105	145	150	145	150	480	485	6/12	3000	3500	3800	3000	3500	3800
	A30/35/M330	3300	2205	2320	3970	4090	4405	4405	145	150	145	150	480	485	6/12	3000	3500	3800	3000	3500	3800
	A30/35/M350	3500	2305	2420	4170	4290	4605	4605	145	150	145	150	480	485	6/12	3000	3500	3800	3000	3500	3800
	A30/35/M360	3600	2405	2470	4270	4390	4705	4705	145	150	145	150	480	485	6/12	3000	3500	3800	3000	3500	3800
	A30/35/M370	3700	2455	2520	4370	4490	4805	4805	145	150	145	150	480	485	6/12	3000	3500	3800	3000	3500	3800
	A30/35/M380	3800	2505	2570	4470	4590	4905	4905	145	150	145	150	480	485	6/12	3000	3500	3800	3000	3500	3800
	A30/35/M400	4000	2655	2720	4670	4790	5105	5105	145	150	145	150	480	485	6/12	3000	3500	3800	3000	3500	3800
	A30/35/M430	4300	2805	2870	4970	5090	5405	5405	145	150	145	150	480	485	6/6 * 6/12	2900	3250	3650	3000	3400	3800
	A30/35/M450	4500	2905	2970	5170	5290	5605	5605	145	150	145	150	480	485	6/6 * 6/12	2850	3100	3350	3000	3350	3700
	A30/35/M480	4800	3055	3120	5470	5590	5905	5905	145	150	145	150	480	485	6/6 * 6/12	2700	2900	3100	2900	3050	3450
	A30/35/M500	5000	3155	3220	5670	5790	6105	6105	145	150	145	150	480	485	6/6 * 6/12	2550	2800	2850	2850	2850	3200
	A30/35/M550	5500	3405	3470	6170	6290	6605	6605	145	150	145	150	480	485	3/6 * 3/6	2250	2350	2650	2650	2700	3000
A30/35/M600	6000	3655	3720	6670	6790	7105	7105	145	150	145	150	480	485	3/6 * 3/6	1550	1750	2200	2200	2400	2800	
Two-stage Full Free Lift	A30/35/U250	2500	1880	1990	3260	3355	3620	3620	1120	1140	735	845	480	485	6/12	3000	3500	3800	3000	3500	3800
	A30/35/U270	2700	1980	2090	3460	3555	3820	3820	1220	1240	835	945	480	485	6/12	3000	3500	3800	3000	3500	3800
	A30/35/U300	3000	2090	2190	3770	3845	4120	4120	1330	1340	945	1045	480	485	6/12	3000	3500	3800	3000	3500	3800
	A30/35/U330	3300	2240	2390	4070	4155	4420	4420	1480	1540	1095	1245	480	485	6/12	3000	3500	3800	3000	3500	3800
	A30/35/U360	3600	2390	2550	4370	4455	4720	4720	1630	1700	1245	1405	480	485	6/12	3000	3500	3700	3000	3500	3700
A30/35/U400	4000	2590	2750	4770	4855	5120	5120	1830	1900	1445	1605	480	485	6/12	2850	3250	3550	3000	3500	3700	
Three-stage Full Free Lift	A30/35/N400	4000	2005	2105	4780	4855	5120	5120	1235	1260	860	960	490	505	6/6	2700	3000	3200	2900	3400	3600
	A30/35/N430	4300	2105	2205	5080	5155	5420	5420	1335	1360	960	1060	490	505	6/6	2550	2850	3200	2850	3350	3600
	A30/35/N450	4500	2175	2175	5335	5355	5670	5670	1405	1430	1030	1130	490	505	6/6	2400	2700	3100	2700	3200	3550
	A30/35/N480	4800	2275	2375	5580	5655	5920	5920	1505	1530	1130	1230	490	505	6/6	2250	2450	2800	2550	2950	3150
	A30/35/N500	5000	2340	2440	5780	5855	6120	6120	1570	1595	1195	1295	490	505	6/6	2100	2300	2600	2400	2800	3100
	A30/35/N550	5500	2505	2605	6280	6355	6620	6620	1735	1760	1360	1460	490	505	3/6	1650	1800	2050	2250	2550	2800
	A30/35/N600	6000	2725	2770	6780	6855	7120	7120	1955	1925	1580	1625	490	505	3/6	1200	1300	1550	2100	2300	2550
	A30/35/N650	6500	2900	3000	7280	7355	7615	7615	2130	2155	1755	1850	490	505	3/6	\	\	\	1950	2050	2300
	A30/35/N700	7000	3105	3170	7780	7855	8115	8115	2335	2325	1960	2125	490	505	3/6	\	\	\	1800	1850	2050

100kg less with integral side shifter, 200kg less with external side shifter.

\* Optional tilt Angle for dual wheels.

3000-3800kg models can choose three levels 7500mm,8000mm door frame.

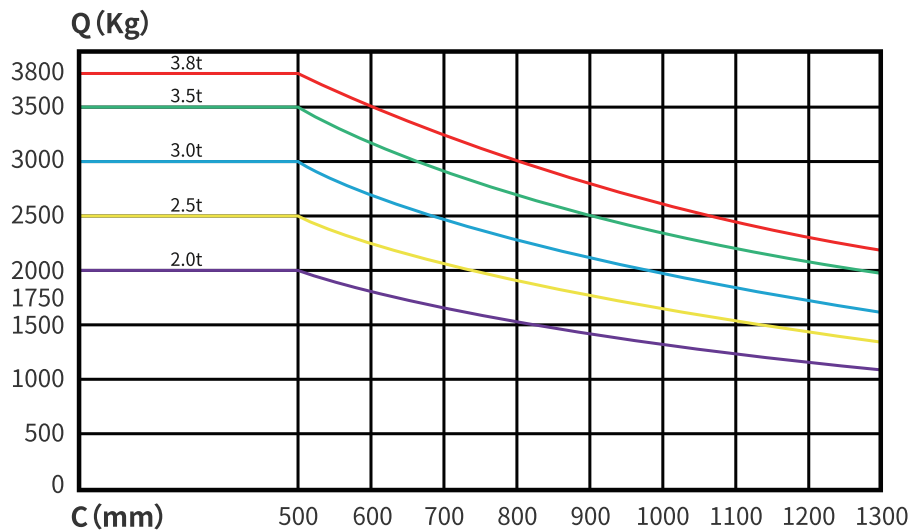
## Standard configuration

- Load backrest
- Full vehicle LED lighting
- Standard with Lithium Battery
- Two-spool multi-way valve
- 2-stage 3m Mast
- Cup holder
- Pneumatic Tires (single)
- Overhead guard
- 1.07-meter hook-mounted forks
- Pin code Panel
- Emergency Power Off Switch
- Rain cover
- Fork descent cushioning
- Rearview mirror
- Color Display instrument
- Onboard tool kit

## Optional configuration

- Tilt cylinder cover
- Solid tires
- Non-marking tire
- lowered overhead
- Front wind-shield
- Full suspension seat
- Radiator grille
- Fire extinguisher
- Rear handrail with horn
- Rear working light
- Cabin heater
- External side shifter
- 3rd/4th/5th Function Valve (Multi-way Valve)
- Big Capacity Lithium Battery
- Electric fan
- Customer-specified Color
- Cabin ac+heater
- Integrated Side Shifter
- Dual Front Tires
- Cabin
- Welded Metal Roof
- Warning light
- Semi-enclosed Seat
- External Fork Positioner

## Load curve diagram



## NOBLELIFT CHINA

Address: 528 Changzhou Road, Taihu Sub-district,  
 Changxing, Zhejiang 313100 China  
 Tel: 86-572-6210817 6210311  
 Fax: 86-572-6210777 6128612  
 Email: info@noblelift.com  
 Http: www.noblelift.com www.noblelift.cn



Official website



Our Wechat